

Social Media Toolkit - Welcome!

Interactive Menu

Thank you for your support of the “Resilient Teaching Through Times of Crisis and Change” course!

Welcome

In this toolkit, you will find messaging from the “Resilient Teaching Through Times of Crisis and Change” course landing page, the course logo, downloads to promotional videos, a shortened link to the course description page, and sample social media posts that you are welcome to share through your channels.

About Page

Media Assets

Social Copy

Please contact us at ai-marketing@umich.edu if you have any questions or ideas for additional opportunities to collaborate in support of this course.

Social Media Toolkit - About

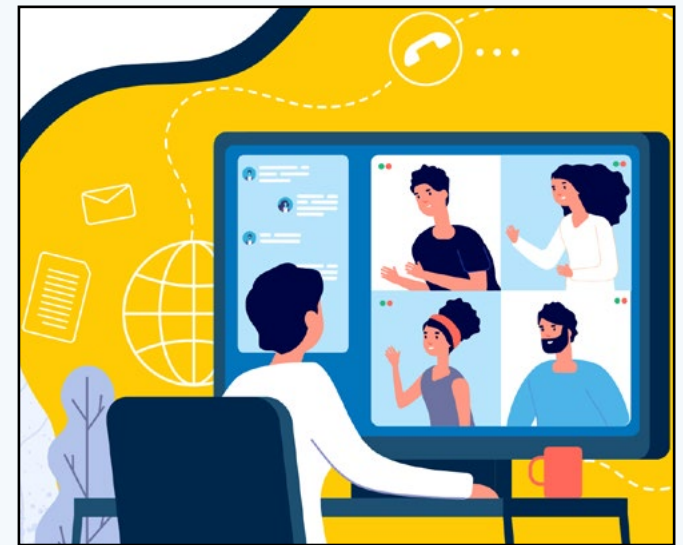
Course Description

Resilient teaching is the ability to facilitate learning experiences that are designed to be adaptable to fluctuating conditions and disruptions. This teaching ability can be seen as an outcome of a design approach that attends to the relationship between learning goals and activities, and the environments they are situated in. Resilient teaching approaches take into account how a dynamic learning context may require new forms of interactions between teachers, students, content, and tools. Additionally, they necessitate the capacity to rethink the design of learning experiences based on a nuanced understanding of context.

The course is designed with higher education faculty, lecturers, and graduate student instructors in mind, but may also be applicable to educators in a wide variety of instructional environments. The course is aimed at participants who may be asked to rethink how they teach in the immediate or near future due to the ever-changing circumstances of the current COVID-19 pandemic. While the creation of this course is motivated by the current crisis, we expect it will remain relevant to instructors who are faced with disruptions and change to their teaching for any number of reasons and must quickly adapt their course designs.

To support learning and reflection, we are introducing a new journaling tool within the course that provides a place for participants to reflect on their own experiences. To support community growth, participants can choose to share their journal entries with the wider course community in an interactive gallery space.

Course Image



Click on the image to download.

Social Media Toolkit - Media Assets

Social Images



Flyer



Video Files

Welcome to the Course

YouTube link: <https://youtu.be/1NyYyV9rgtM>

**In Conversation with
Josh Kim and Eddie Maloney**

YouTube link: <https://youtu.be/asFYttFlick>

A Look in Our Rear View Mirror

YouTube link: <https://youtu.be/Ah3dvtl5Cx0>

**The Impact of the Covid-19
Crisis on Teaching**

YouTube link: <https://youtu.be/e3YTv9Z2C6c>

A Look Towards the Horizon Line

YouTube link: <https://youtu.be/8W1L41O1RsU>

A Community-Oriented MOOC

YouTube link: <https://youtu.be/xY6PLcPIXPI>

Click on the thumbnails to download the image or video.

Social Media Toolkit - Social Copy

Short URL: <http://myumi.ch/NxGv7>

Recommended Hashtags:

#Resilient

#OnlineTeaching

#ResilientTeachingMOOC

Guide pedagogical decision making during ever-changing times in the new course, "Resilient Teaching Through Times of Crisis and Change."

Enroll now at <http://myumi.ch/NxGv7>.

Recommended Content: Social Images

Learn how to build courses able to withstand changing conditions in the "Resilient Teaching Through Times of Crisis and Change" course with Rebecca Quintana, PhD.

Enroll now at <http://myumi.ch/NxGv7>.

Recommended Content: A Look Towards the Horizon Line

Explore a range of teaching resources developed in response to the COVID-19 pandemic and learn how to design courses for changing conditions in the new "Resilient Teaching Through Times of Crisis and Change" course.

Get started at <http://myumi.ch/NxGv7>.

Recommended Content: A Community-Oriented MOOC

Join Rebecca Quintana, PhD, to develop a resilient teaching plan and guide pedagogical decision making through the COVID-19 pandemic in the "Resilient Teaching Through Times of Crisis and Change" course.

Enroll now at <http://myumi.ch/NxGv7>.

Recommended Content: The Impact of COVID-19 Crisis

Reflect on the rapid transition from face-to-face instruction to online learning and see how you can prepare for future disruptions in the "Resilient Teaching Through Times of Crisis and Change" course, offered through Michigan Online.

Get started at <http://myumi.ch/NxGv7>.

Recommended Content: A Look in Our Rear View Mirror

Enroll now in the "Resilient Teaching Through Times of Crisis and Change" course and learn how to design courses resilient to disruption with Rebecca Quintana, PhD.

Get started at <http://myumi.ch/NxGv7>.

Recommended Content: Welcome to the Course

Copy the text to use for social post promotion.